



Eduardo Paz • Jennifer Morehead • PJ Rodriguez



Search Results for "Search Results"

- 1. Search Results
- 2. Search Results
- 3. Search Results
- 4. Search Results
- 5. Search Results
- 6. Search Results
- 7. Search Results
- 8. Search Results
- 9. Search Results
- 10. Search Results
- 11. Search Results
- 12. Search Results
- 13. Search Results
- 14. Search Results
- 15. Search Results
- 16. Search Results
- 17. Search Results
- 18. Search Results
- 19. Search Results
- 20. Search Results

Search Results

A person is walking through a modern office space. The office has large windows on the right side, providing a view of the outside. There are several cubicles with desks and chairs. The lighting is dim, and the overall atmosphere is professional and focused.

Challenge

Problem

Adjusting to new tools and software in a professional environment can be challenging. Looking for help in the internet is often time consuming and disrupts the productivity of employees.

How might we provide an efficient and collaborative way for people to learn new skills, without disrupting their workflows?

How do people learn new skills now?



Finding the right content is time-consuming and inefficient



“Allowing learners to directly visualize, manipulate, and interact with complex structures reduces cognitive load”

McKinsey & Company study in collaboration with Microsoft



48%

Of students claim the pandemic has worsened their ability to remain focused & engaged.

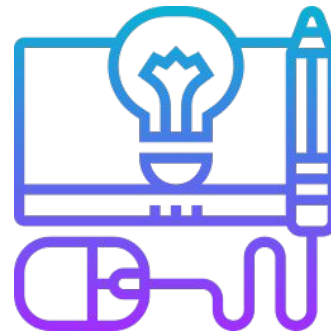
*Economist Intelligence Unit Report
Sponsored by Microsoft*



35%

Increase in engagement and retention when learning with immersive and 3D technologies

*McKinsey & Company study in
collaboration with Microsoft*



90%

Of students remember the material if it is learned through experience

*National Survey by
Dreambox Learning*

A blurred background of a modern office. In the foreground, the back of a person's head and shoulders are visible; they are wearing a red shirt and are seated at a desk, looking at a computer monitor. The office has a high ceiling with exposed wooden beams and long, horizontal light fixtures. Other desks and office equipment are visible in the background, creating a sense of a busy, open-plan workspace.

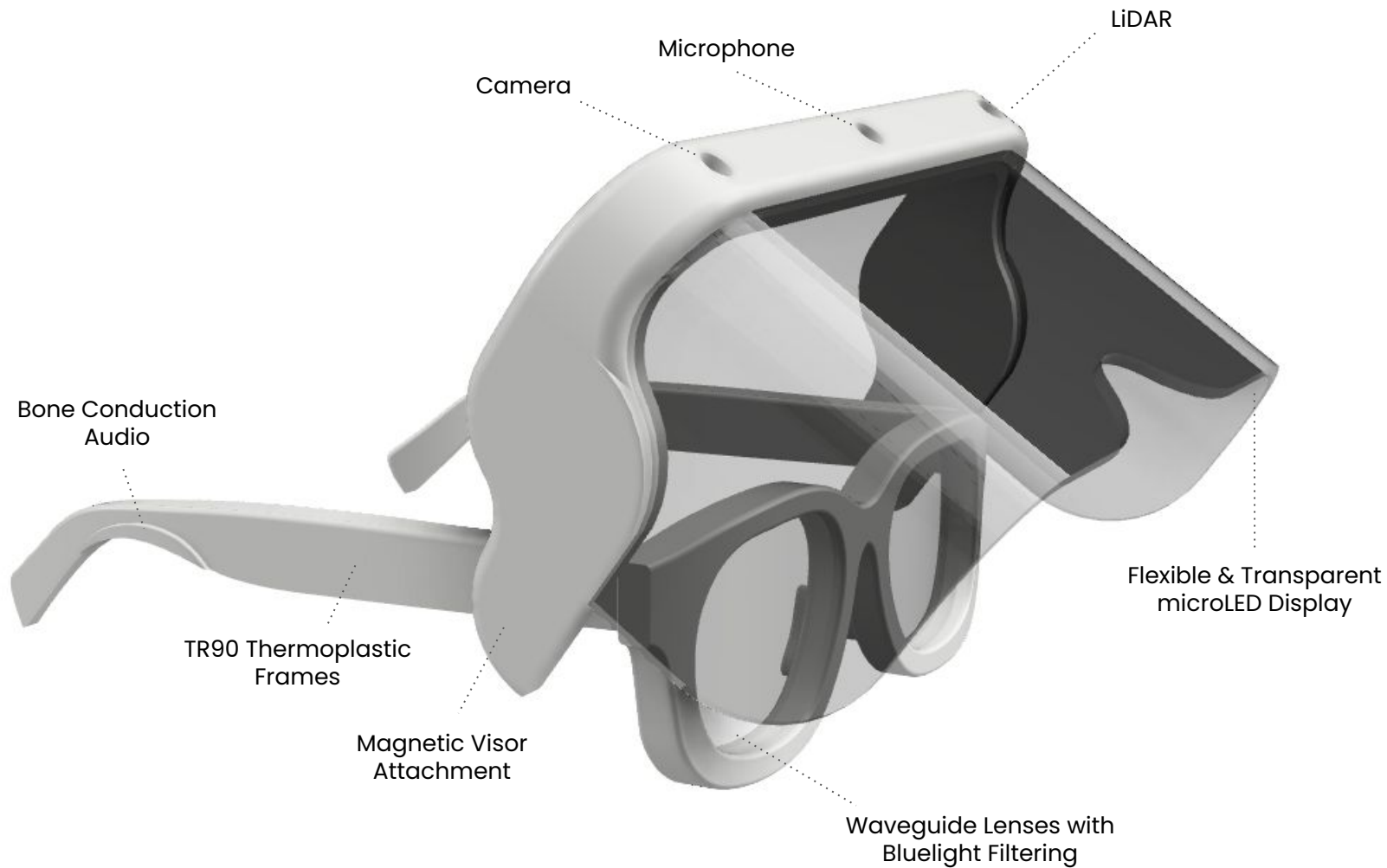
Concept

SPEX is a **collaborative** network for **learning and sharing skills** through the SPEX MR glasses



User

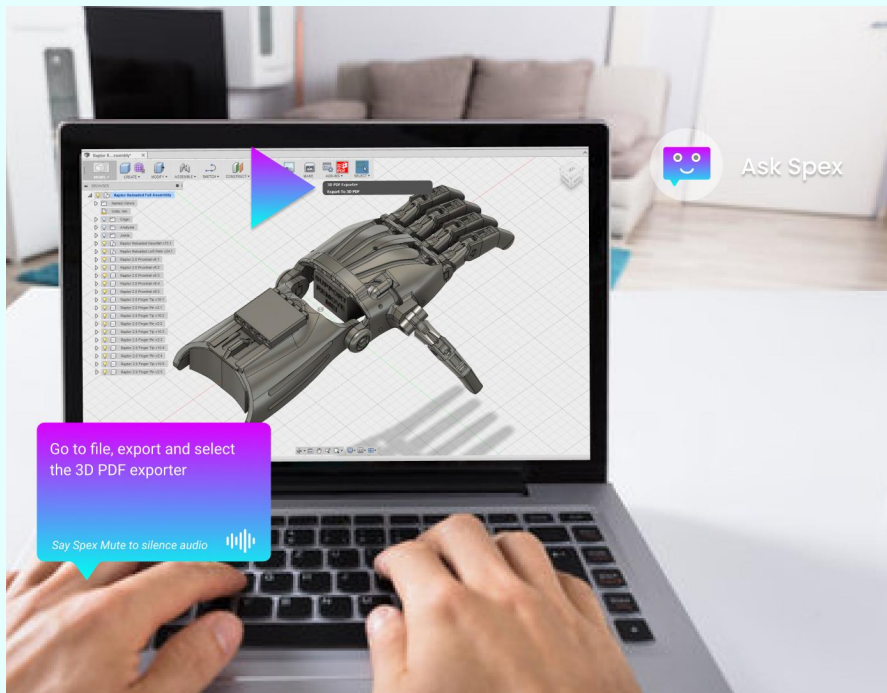
Creator/Expert





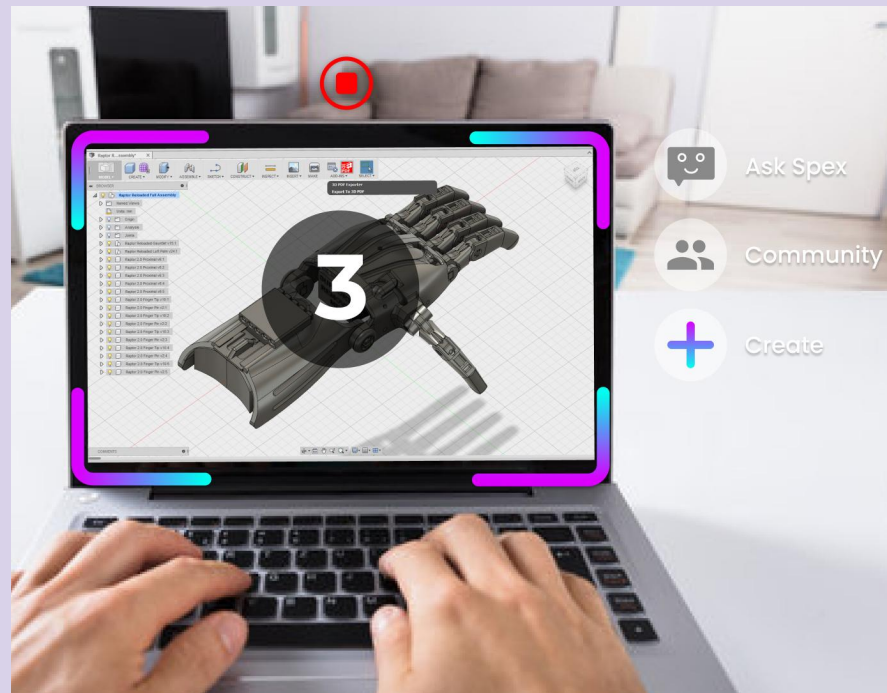
USER

JEREMY DIAZ
DENVER
28 YEARS OLD
VISUAL DESIGNER AT APPAREL
COMPANY



CREATOR/EXPERT

EMMA SHELDON
LONDON
32 YEARS OLD
FREELANCE MOTION DESIGNER



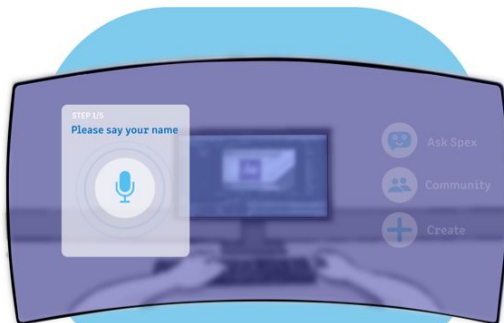
A close-up, slightly blurred photograph of a person's hands typing on a laptop keyboard. The person is wearing a dark blue button-down shirt with large white polka dots and a metal link watch on their left wrist. The word "Storyboard" is overlaid in white text in the center of the image.

Storyboard

1



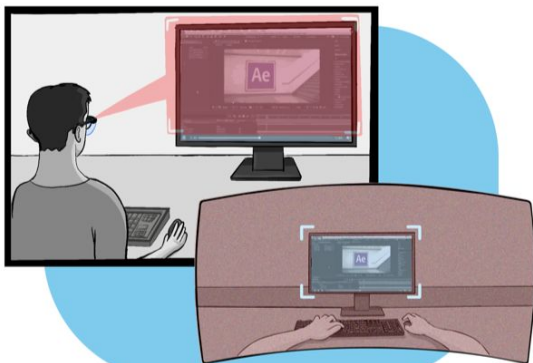
2



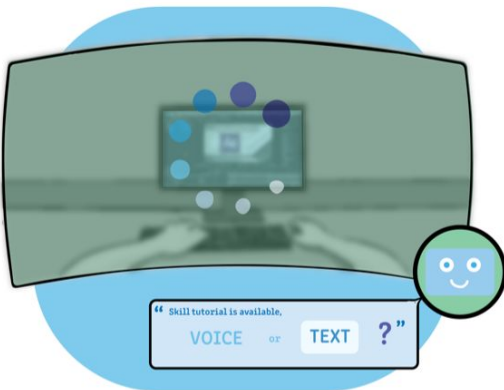
3



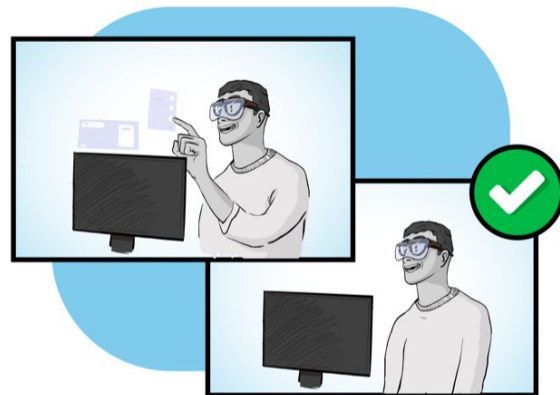
4



5



6





Heuristics

Recognize, Diagnose, and Recover From Errors

Insight

The Spex network may not have the desired skill but should provide an intermediary solution

“Spex, help me with make a task in Team Gantt”

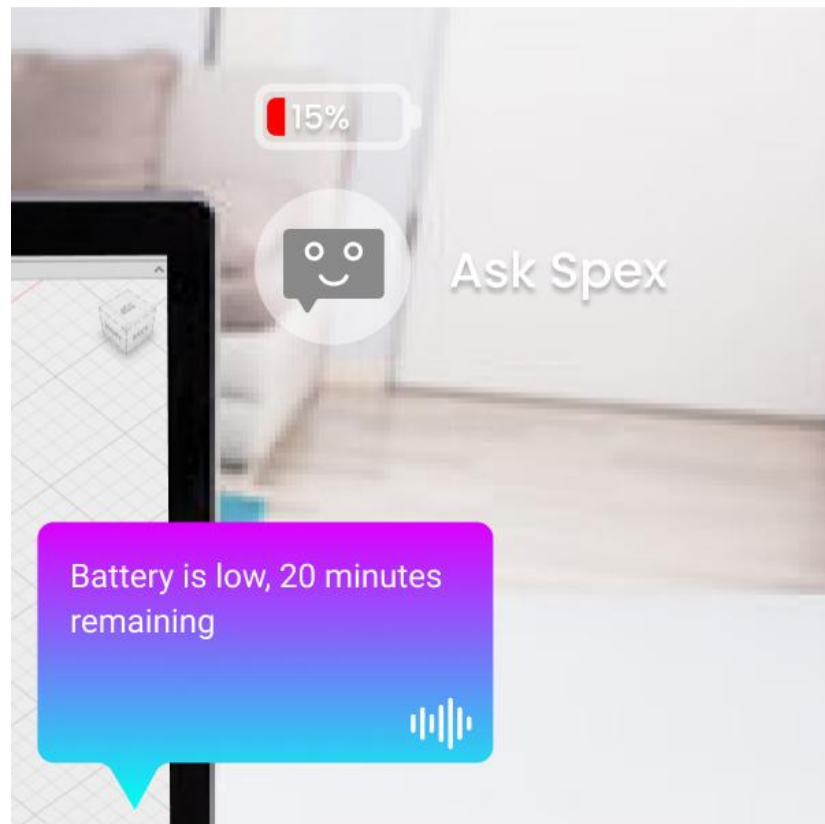
“I’m sorry, we don’t have skills yet for Team Gantt. We can suggest this related video tutorial from YouTube”



Visibility of System Status

Insight

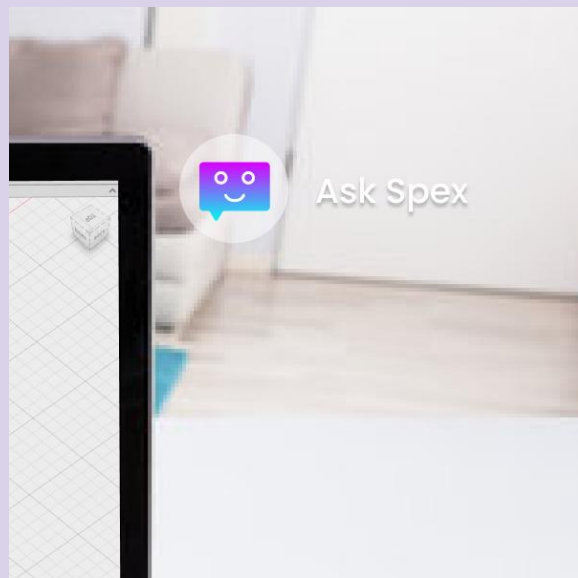
Spex should let users know of important status both visually and audibly



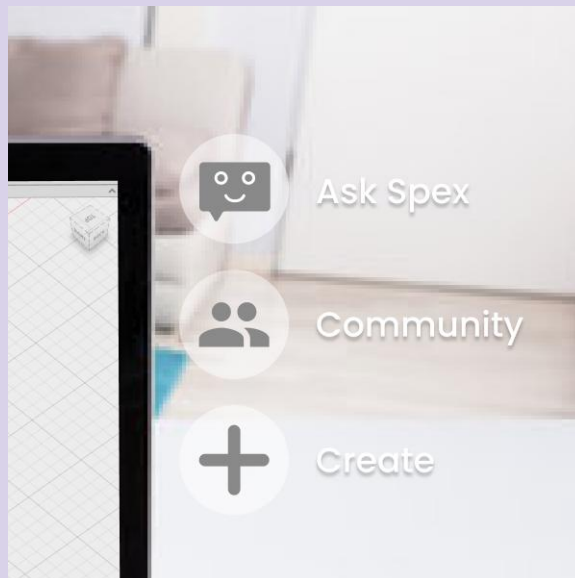


UI

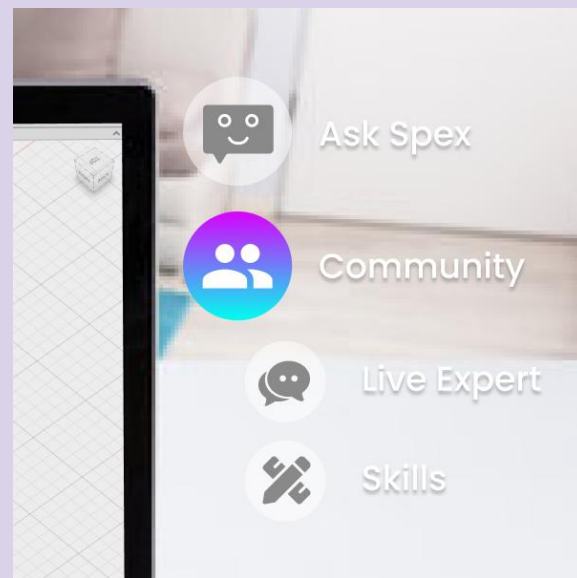
"Spex, how do I...?"



"Spex, menu"



"Spex, community"



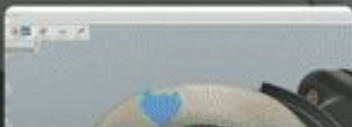


Fusion 360

Maya

Unity

Figma



Ask Spex



Community



Live Expert

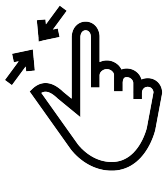


Skills

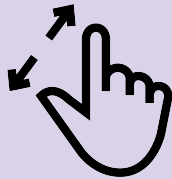


Create

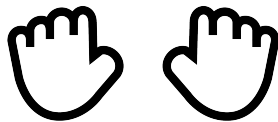
Spex, zoom in.
Pinch in fingers.



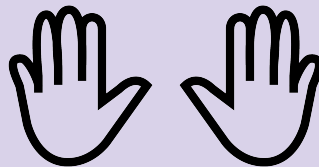
Spex, zoom out.
Pinch out fingers.



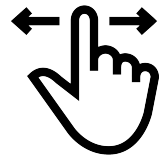
Spex, hide items.
Close both hands.



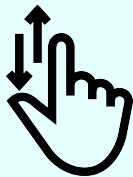
Spex, show items.
Open both hands.



Spex, scroll horizontally.
Swipe left or right.



Spex, scroll vertically.
Swipe up or down.



Spex, start recording.
Open one hand.



Spex, end recording.
Close one hand.



Spex, hover.
Point with finger.

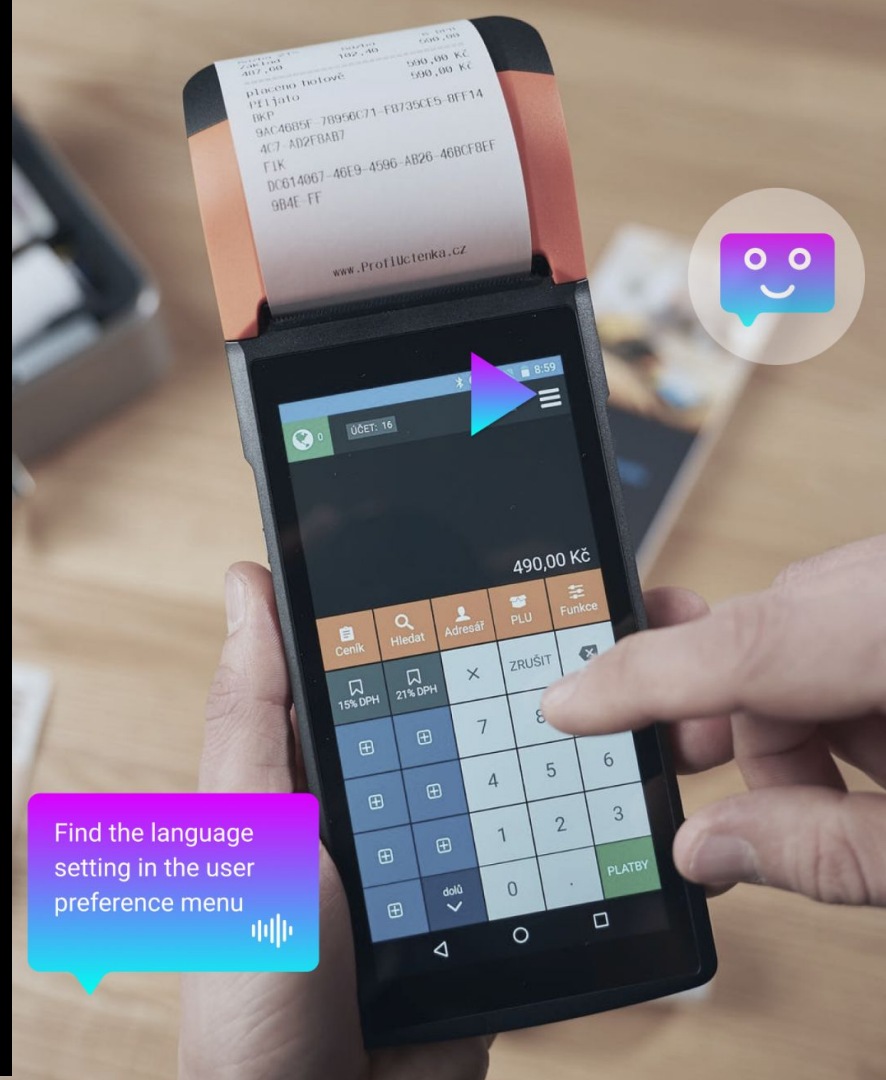


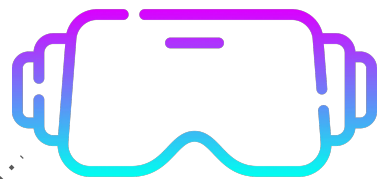
Spex, select.
Point with finger for 3 sec.



Future Possibilities







A person with short blonde hair, wearing a light blue button-down shirt, is seated at a wooden desk in a modern office. They are focused on their work, with their hands on a laptop keyboard. The desk also holds a spiral notebook and a glass of water. In the background, there are large windows with dark frames, a white shelving unit, and other office furniture. The overall atmosphere is professional and calm.

**What do you
want to learn?**

Credits

Icons: <https://www.flaticon.com/>

Images: <https://stock.adobe.com/>

Images: <https://unsplash.com/>